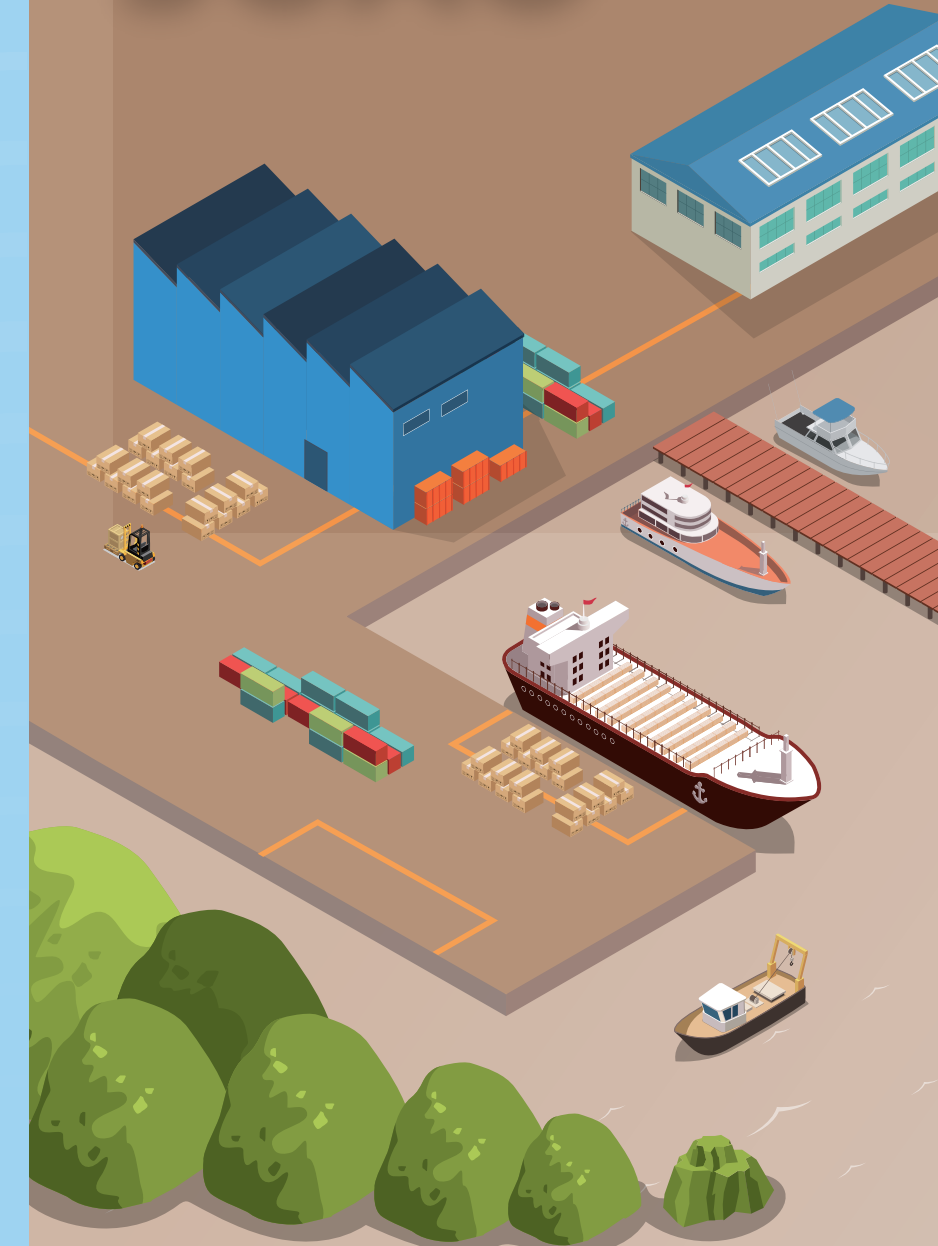


Port of SUAO

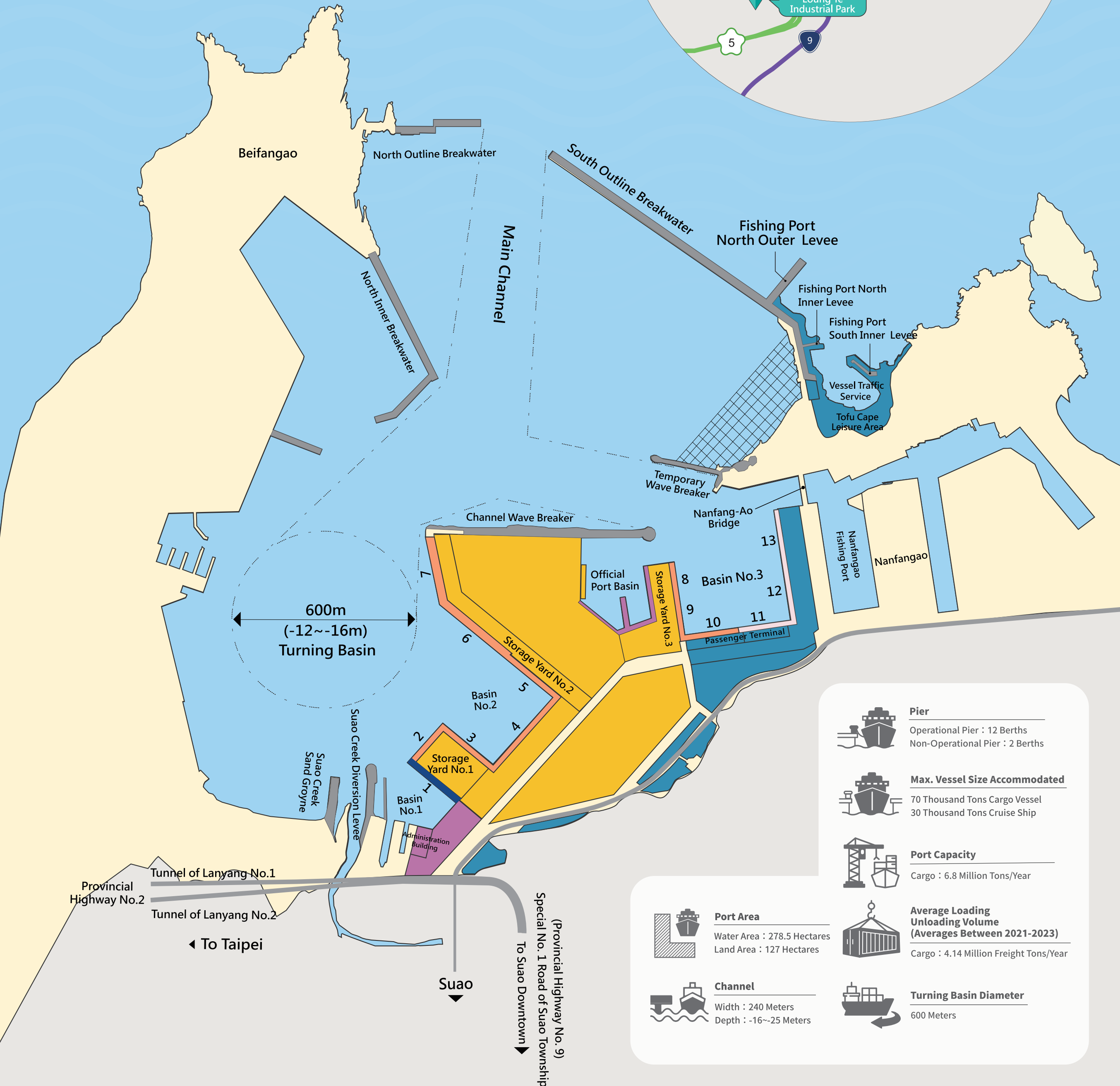


Taiwan International Ports Corporation, Ltd., 2024

Port of Suao, Taiwan International Ports Corporation, Ltd.
No.1, Gangqun, Su-ao Township, Yilan
County 270011, Taiwan, R.O.C.
TEL +886-3-9965121 WEB twpport.com.tw/en/



- Port Administrative Zone
- Bulk Cargo/ Multifunctional Terminal Zone
- Logistics & Warehousing Zone
- Passenger/ Passenger and Cargo Terminal Zone
- Tourist Recreation & Business Zone
- Official Terminal Zone
- Reclamation Area (Under Construction)



	Pier Operational Pier : 12 Berths Non-Operational Pier : 2 Berths
	Max. Vessel Size Accommodated 70 Thousand Tons Cargo Vessel 30 Thousand Tons Cruise Ship
	Port Capacity Cargo : 6.8 Million Tons/Year
	Average Loading Unloading Volume (Averages Between 2021-2023) Cargo : 4.14 Million Freight Tons/Year
	Turning Basin Diameter 600 Meters

	Port Area Water Area : 278.5 Hectares Land Area : 127 Hectares
	Channel Width : 240 Meters Depth : -16~-25 Meters

PORT OF SUAO

The Cargo Gateway of The Lanyang Area



Warehouse No. 15



Suao Passenger Terminal



Yard No.6 of Lungteh Shipbuilding Co., Ltd.



Free Trade Zone Warehouse